

Cottages on the Coast

FAIR HARBORS AND SECRET SHORES

532

LINDA
LEIGH
PAUL





Evergreen Landing

ARCHITECT: Will Winkelman, Whitten Architects, Portland, Maine

PHOTOGRAPHER: James R. Salomon



◀ *An old family vacation cottage is replaced by a light-filled adventure.*

ISLAND LIFE can be trying. The owner of this cottage at Evergreen Ledge on Peakes Island, Maine, wrote, “it can turn a trip to the grocery store into a safari . . . but any inconvenience is overcome by the beauty of the place.” One of a small group of islands in Casco Bay, Peakes Island originated as a Methodist retreat community. Like many religious retreats of the early twentieth century on the east and west coasts, the housing was minimal. Often simple tents or tent “cabins” were provided, in which a half wall and floor were made of wood planks, and the upper half wall and ceilings were made of canvas.

The new cottage replaced the owners’ previous turn-of-the-century cottage which, multiple remodelings notwithstanding, was consistent with neighboring architecture. The tight, sloping, waterfront site was set in a thickly populated seasonal community. The owners asked Will Winkelman, the architect, to design a three-season cottage, featuring a light-filled, two-story living-dining-kitchen space arranged under an exposed, trussed three-quarter-barrel-vaulted roof structure. The lightness of the roof and its field of skylights is reminiscent of the lightness of tents. The new design also incorporates two flanking “book-end” traditional island cottage forms to squarely face neighbors on the upside of the slope. One “book-end” contains bedrooms and the other houses the front entry. The traditional proportions of these two typical island architectural components draw the structure together as a whole and insert it effortlessly into the surrounding neighborhood. While inside, the owners enjoy their dream-come-true cottage with its three bedrooms, two baths, and a dorm room for the grandsons on the third floor. All of their needs have been met in less than 1,850 square feet.

Peakes Island has been a family vacation destination since the sixties. Over time it became a bigger part of life for this family and now, with frequent and dependable ferry service, nine months of the year are island months. Summer is devoted to picnics, fishing and boating, and gardening. And many, many hours in the living room just reading and looking out over the water at the incomparable north-facing views of Great Diamond Island and Casco Bay, in all seasons and weather.



Downslope from neighbors, the new retreat reveals its traditional cottage "book-end" forms.

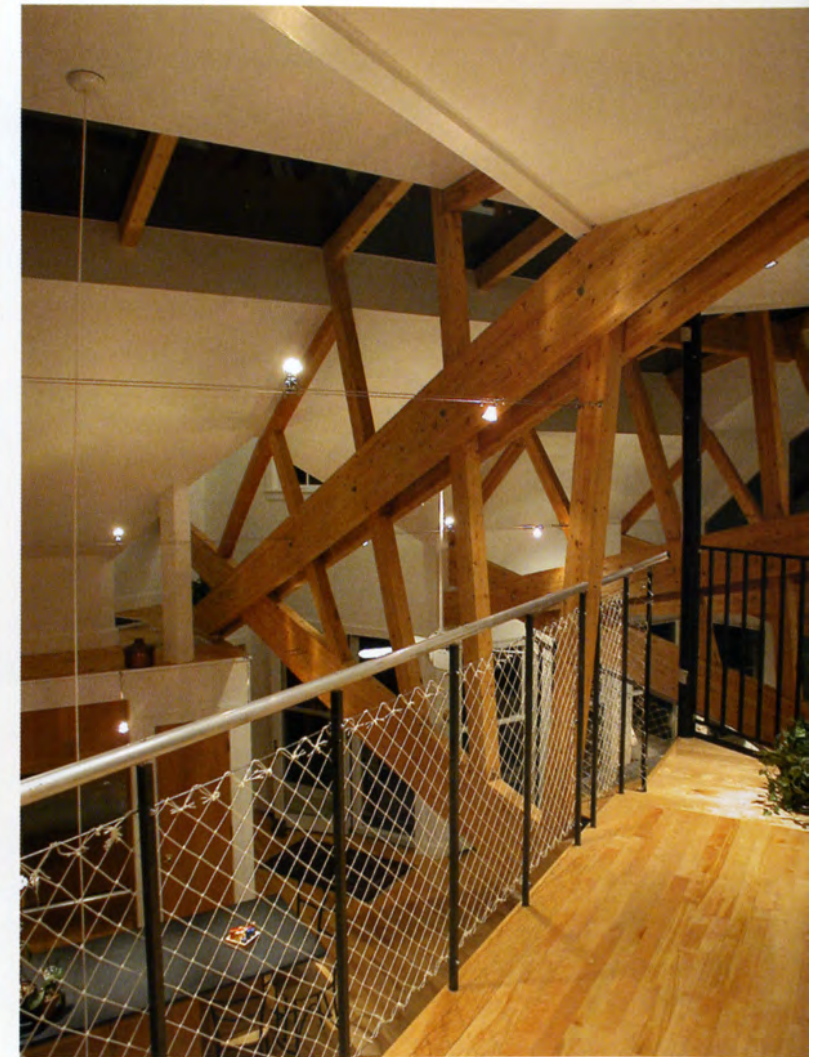
Interior lighting fills the exposed, trussed three-quarter-barrel vaulted space with the activity of architecture.





Kitchen and dining areas share the openness of the living room.

◀ *The two-story living room with glass vaults overhead, fills the interior with natural light. A spiral stair leads to the loft.*



The loft landing looks down into the kitchen.